

JumboMix[®] 3500

Large capacity lab blender



Accuracy and heavy duty blending
for large samples

ambifood[®]

Blend up to 5000 mL!

JumboMix® lab blender guarantees optimal bacterial extraction by the action of its 2 paddles. Adapted to any volume between 200 mL and 5000 mL, it guarantees the homogenization in 30 to 60 s of all samples.

Applications: E. Coli O157:H7, trichinella (WarmMix® model), salmonella, baby milk powder, chocolate, sterility control tests, Cryptosporidium and Giardia parasites, sample pooling (e.g.: 15 samples of 25 g to reach 375 g)...

Powerful and heavy duty

- Up to 5000 mL capacity
- Ideal for your 375 g samples diluted to 1/10th
- Very silent

Ergonomic

- Side-by-side paddle stop: easy insertion of the bag
- All 304L stainless steel trolley, ergonomic height (in option)
- Digital screen

Easy cleaning

- All stainless steel
- 270° fully opening door

Security

- The handle shuts and starts the blending
- **Q-Tight®** closing: no leaks upwards
- Security drip tray



Guarantee

- Life-time guarantee: Shock absorbers and window
- 3 year guarantee (after validation of the card)
- Made in France

PATENTED

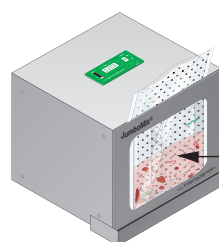
Adjustable blending power

- Adapt the blending power to your sample
- Up to 22.6 kg thrust: hard samples are blended

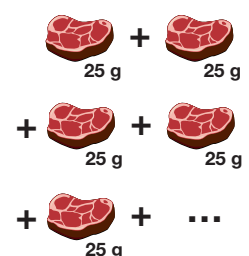


Ideal for your applications

- 375 g for salmonella
- 75, 325 or 375 g sample for E. Coli O157:H7
- 125 g sample for Listeria and Listeria monocytogenes
- Sample pooling



SAMPLE POOLING



JumboMix® 3500

3 models available:



JumboMix® 3500 VP

> Essential features

Ref. 031 230



JumboMix® 3500 VW

> Window door

Ref. 032 230



JumboMix® 3500 WarmMix®

> Thermal regulation up to + 50°C

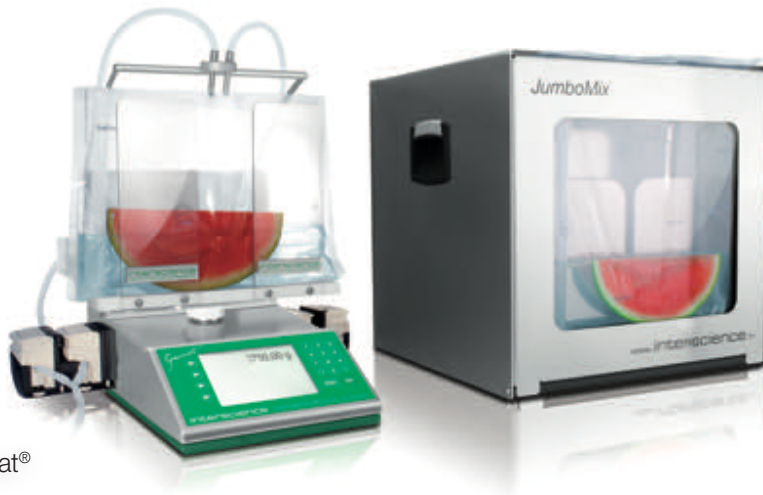
Ref. 033 230



Technical specifications at the back of the brochure →

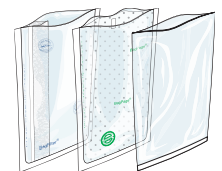
JumboLine®

Ideal for your preparation of 375 g samples diluted to 1/10th!



JumboGravimat®

Gravimetric dilutor
Ref. 512 235



BagFilter® 3500

Sterile bag with lateral filter
Ref. 113 510

BagPage® 3500

Sterile bag with full-page filter
Ref. 123 010

BagLight® 3500

Sterile bag
Ref. 133 025



JumboStand

Ergonomic trolley
Ref. 037 000



BagOpen® 3500

Bag opener
Ref. 211 350



BagRack® 3500

2 comp. - Ref. 221 352
4 comp. - Ref. 221 350



BagClip® 3500

Closing clips
Ref. 231 350



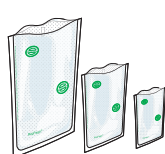
BagPipet® & BagTips

Pipet - Ref. 251 091
Sterile tips - Ref. 252 024

Technical specifications

		JumboMix® 3500 VP	JumboMix® 3500 VW	JumboMix® 3500 WarmMix®
	Reference	031 230	032 230	033 230
Equipment	Window door	-		-
	270° opening door			
	Security drip tray	in option		
	Adjustable blending power (up to 22.6 kg thrust)			
	Blending power indicator			
	Digital screen			
	Q-Tight® anti-leak system			
	Side-by-side paddle stop			
	All stainless steel			
	Compact and ergonomic			
	Regulated heating door	-	-	
Technical specifications	Door weight	6.9 kg	3.9 kg	6.1 kg
	Blending time	from 1 s to 59 min, ∞		
	Speed	variable 1.5 / 3 / 4.5 / 6 strokes/s		
	Dimensions (w x d x h)	52 x 47 x 47 cm		63 x 50 x 47 cm
	Weight	58 kg	56 kg	63 kg
	Power	100-127 V~ / 220-240 V~ 50-60 Hz		
Guarantee	Capacity	200 - 5000 mL		
	Made in France			
	Life guarantee	Shock absorbers and window door		
Guarantee	3 years guarantee (after registration)			
Certified production		ISO 9001 2008	WEEE 2002/96/EC	RoHS 2002/95/EC
			CE	MADE IN FRANCE

Discover our complete range for microbiology



BagFilter®
Sterile bags



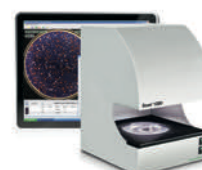
Gravimat®
Gravimetric dilutors



FlexiPump®
Peristaltic pumps



easySpiral Dilute®
Serial dilutors and platers



Scan®
Colony counters

ambifood®

Rua Dominguez Alvarez, 44, 4.16 . 4150-801 Porto . Portugal

+ 351 229 962 069 . geral@ambifood.com . www.ambifood.com